

RoHS Compliant & Pb-Free Product
Package Style: SOT89

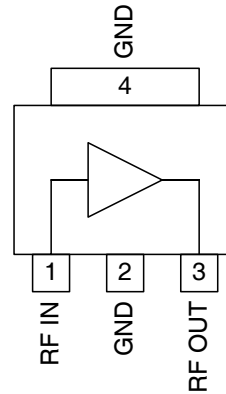


Features

- DC to >6000 MHz Operation
- Internally Matched Input and Output
- 15.5 dB Small Signal Gain
- +25.5 dBm Output IP3
- +13 dBm Output P1dB

Applications

- Basestation Applications
- Broadband, Low-Noise Gain Blocks
- IF or RF Buffer Amplifiers
- Driver Stage for Power Amplifiers
- Final PA for Low-Power Applications
- High Reliability Applications



Functional Block Diagram

Product Description

The RF3377 is a general purpose, low-cost RF amplifier IC. The device is manufactured on an advanced Gallium Arsenide Heterojunction Bipolar Transistor (HBT) process, and has been designed for use as an easily-cascadable 50Ω gain block. Applications include IF and RF amplification in wireless voice and data communication products operating in frequency bands up to 6000MHz. The device is self-contained with 50Ω input and output impedances and requires only two external DC-biasing elements to operate as specified.

Ordering Information

RF3377 General Purpose Amplifier
RF3377XPCBA-410 Fully Assembled Evaluation Board

Optimum Technology Matching® Applied

- | | | | |
|--|--------------------------------------|-------------------------------------|-----------------------------------|
| <input checked="" type="checkbox"/> GaAs HBT | <input type="checkbox"/> SiGe BiCMOS | <input type="checkbox"/> GaAs pHEMT | <input type="checkbox"/> GaN HEMT |
| <input type="checkbox"/> GaAs MESFET | <input type="checkbox"/> Si BiCMOS | <input type="checkbox"/> Si CMOS | |
| <input type="checkbox"/> InGaP HBT | <input type="checkbox"/> SiGe HBT | <input type="checkbox"/> Si BJT | |

RF MICRO DEVICES®, RFMD®, Optimum Technology Matching®, Enabling Wireless Connectivity™, PowerStar®, POLARIS™ TOTAL RADIO™ and UltimateBlue™ are trademarks of RFMD, LLC. BLUETOOTH is a trademark owned by Bluetooth SIG, Inc., U.S.A. and licensed for use by RFMD. All other trade names, trademarks and registered trademarks are the property of their respective owners. ©2006, RF Micro Devices, Inc.

Absolute Maximum Ratings

Parameter	Rating	Unit
Input RF Power	+13	dBm
Operating Ambient Temperature	-40 to +85	°C
Storage Temperature	-60 to +150	°C
I _{CC}	60	mA



Caution! ESD sensitive device.

Exceeding any one or a combination of the Absolute Maximum Rating conditions may cause permanent damage to the device. Extended application of Absolute Maximum Rating conditions to the device may reduce device reliability. Specified typical performance or functional operation of the device under Absolute Maximum Rating conditions is not implied.

RoHS status based on EU Directive 2002/95/EC (at time of this document revision).

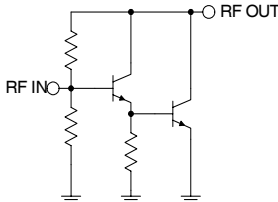
The information in this publication is believed to be accurate and reliable. However, no responsibility is assumed by RF Micro Devices, Inc. ("RFMD") for its use, nor for any infringement of patents, or other rights of third parties, resulting from its use. No license is granted by implication or otherwise under any patent or patent rights of RFMD. RFMD reserves the right to change component circuitry, recommended application circuitry and specifications at any time without prior notice.

Parameter	Specification			Unit	Condition
	Min.	Typ.	Max.		
Overall					T=25 °C, I _{CC} =40mA (See Note 1.)
Frequency Range		DC to >6000		MHz	
3dB Bandwidth		4.4		GHz	
Gain	15.5	16.7		dB	Freq = 500MHz
	15.0	16.5		dB	Freq = 1000MHz
	14.5	15.5		dB	Freq = 2000MHz
		14.5		dB	Freq = 3000MHz
		14.0		dB	Freq = 4000MHz
		13.0		dB	Freq = 6000MHz
Noise Figure		3.0		dB	Freq = 2000MHz
Input VSWR		<2:1			In a 50Ω system, DC to 5000MHz
Output VSWR		<1.8:1			In a 50Ω system, DC to 6000MHz
Output IP3	24.5	25.5		dBm	Freq = 1000MHz
	+24.5	+25.5		dBm	Freq = 2000MHz
Output P1dB	+12.0	+13.5		dBm	Freq = 1000MHz
	+11.5	+13.0		dBm	Freq = 2000MHz
Reverse Isolation		19		dB	Freq = 2000MHz
Thermal					I _{CC} = 40 mA, P _{DISS} = 135mW. (See Note 3.)
Theta _{JC}		122		°C/W	V _{PIN} = 3.38V
Maximum Measured Junction Temperature at DC Bias Conditions		102		°C	T _{CASE} = +85 °C
Mean Time To Failures		77,000		years	T _{CASE} = +85 °C
Power Supply					With 22Ω bias resistor
Device Operating Voltage		3.65	3.7	V	At pin 8 with I _{CC} = 40mA
		4.5	4.8	V	At evaluation board connectors, I _{CC} = 40mA
Operating Current		40	60	mA	See Note 2.

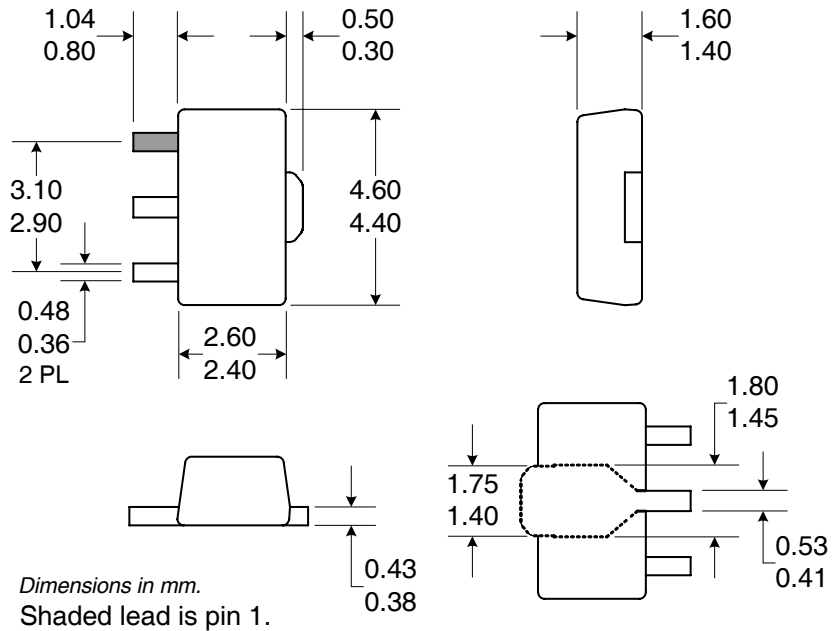
Note 1: All specification and characterization data has been gathered on standard FR-4 evaluation boards. These evaluation boards are not optimized for frequencies above 2.5GHz. Performance above 2.5GHz may improve if a high performance PCB is used.

Note 2: The RF3377 must be operated at or below 60mA in order to achieve the thermal performance stated above. Operating at 40mA will ensure the best possible combination of reliability and electrical performance.

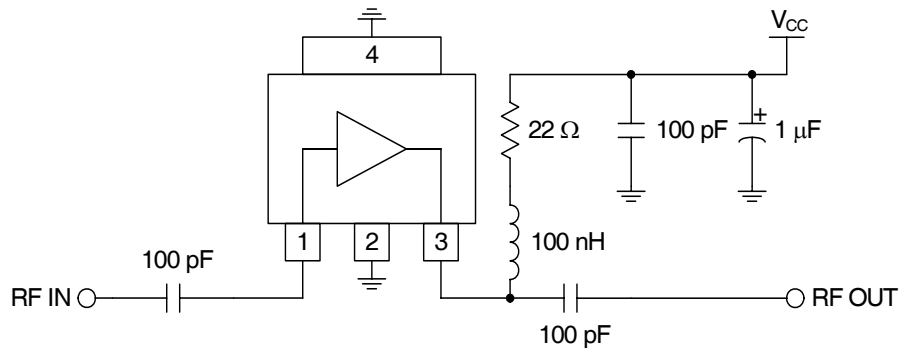
Note 3: Because of process variations from part to part, the current resulting from a fixed bias voltage will vary. As a result, caution should be used in designing fixed voltage bias circuits to ensure the worst case bias current does not exceed 60 mA over all intended operating conditions.

Pin	Function	Description	Interface Schematic
1	RF IN	RF input pin. This pin is NOT internally DC blocked. A DC blocking capacitor, suitable for the frequency of operation, should be used in most applications. DC coupling of the input is not allowed, because this will override the internal feedback loop and cause temperature instability.	
2	GND	Ground connection.	
3	RF OUT	RF output and bias pin. Biasing is accomplished with an external series resistor and choke inductor to V _{CC} . The resistor is selected to set the DC current into this pin to a desired level. The resistor value is determined by the following equation: $R = \frac{(V_{SUPPLY} - V_{DEVICE})}{I_{CC}}$ <p>Care should also be taken in the resistor selection to ensure that the current into the part never exceeds 60mA over the planned operating temperature. This means that a resistor between the supply and this pin is always required, even if a supply near 3.6V is available, to provide DC feedback to prevent thermal runaway. Because DC is present on this pin, a DC blocking capacitor, suitable for the frequency of operation, should be used in most applications. The supply side of the bias network should also be well bypassed.</p>	
4	GND	Ground connection.	

Package Drawing

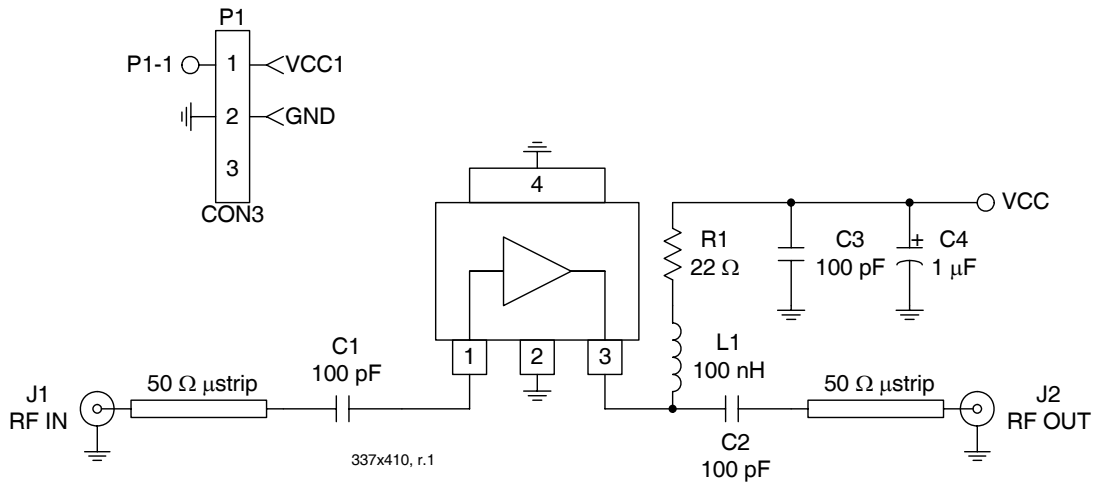


Application Schematic



Evaluation Board Schematic

(Download [Bill of Materials](http://www.rfmd.com) from www.rfmd.com.)



Evaluation Board Layout
Board Size 1.195" x 1.000"
Board Thickness 0.033", Board Material FR-4

